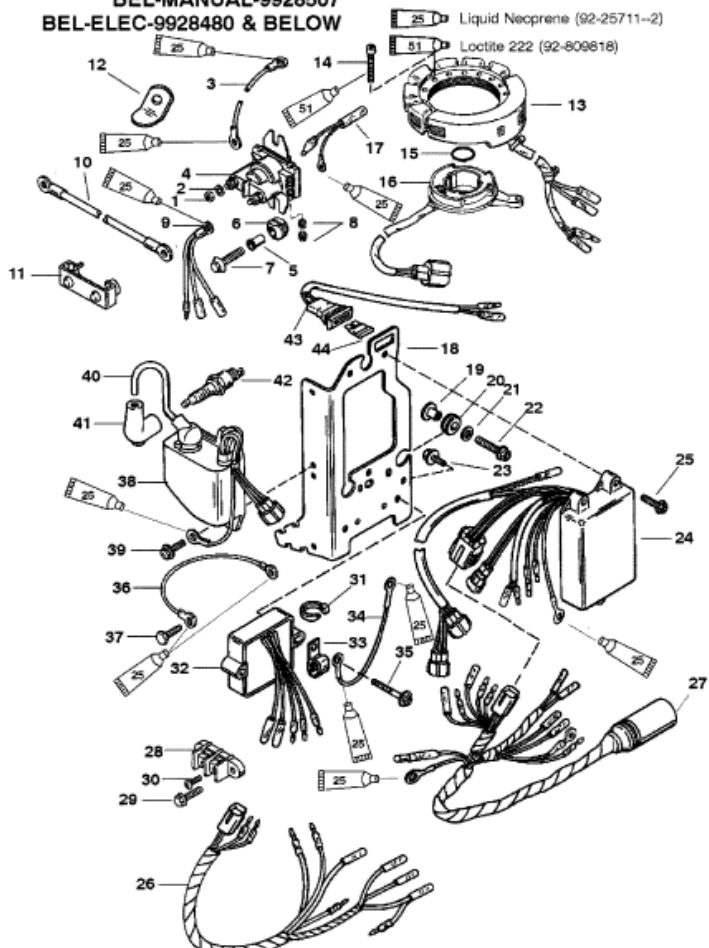


**FOR SERIAL NUMBERS:
 USA-0G380074
 BEL-MANUAL-9928507
 BEL-ELEC-9928480 & BELOW**



NOTE: APPLY LIQUID NEOPRENE TO ALL RING EYELET WIRING TERMINALS.

		Parts List				
Ref	Class	Part	Description	Qty	Comment	Footnote
1	11	64015	NUT (1/4-20)	2		
2	13	26392	LOCKWASHER	2		
3	84	88807A16	CABLE ASSEMBLY (BLACK-4 IN.)	1	ELECTRIC	
4	89	818998A 2	SOLENOID ASSEMBLY	1	ELECTRIC	
5	23	818968	BUSHING	1	ELECTRIC	
6	25	818967	GROMMET	1	ELECTRIC	
7	10	40011129	SCREW (M6 X 25)	2		
8	11	26419	NUT (8-32)	2		
9	84	825004A 1	CABLE (RED)	1	ELECTRIC	
10	84	88439A 4	BATTERY CABLE (NEGATIVE)	1	ELECTRIC	
11	85	97861	INSULATOR	1		
12		827510 1	RETAINER	1		
13	398	832074A 5	STATOR	1	(MANUAL)	4
14	10	40073 30	SCREW (M5 X 30)	5		
15	25	62457	O RING	1		
16		99021A14	TRIGGER	1		
17	84	11149A14	HARNESS ASSEMBLY	1		
18		830236 1	PLATE-ELECTRICAL	1		4
19	23	822003	BUSHING-FLANGED	3		
20	25	822002	GROMMET	3		
21	12	40023 16	WASHER	3		
22	10	40011129	SCREW (M6 X 25)	3		
23	10	821291 14	SCREW (M6 X 14)	1		
24		823251A 5	TPM ASSEMBLY	1		
25	10	822393 20	SCREW (M5 X 20)	3		
26	84	824456A 2	HARNESS ASSEMBLY-ENGINE	1	(MANUAL)	
27	84	824477A 4	HARNESS ASSEMBLY-ENGINE	1	(ELECTRIC)	4
28	86	63813 1	TERMINAL BLOCK	1	MANUAL	
29	10	822393 12	SCREW (M5 X 12)	2	MANUAL	
30	10	62568	SCREW (10-16 X 3/8 IN.)	2	MANUAL	
31	54	816311	STA-STRAP	AR		11
32		815279 5	VOLTAGE REGULATOR	1	ELECTRIC	4
33	54	54457	J-CLIP	1	ELECTRIC	
34	84	88807A20	CABLE (BLACK-11 IN.)	1	ELECTRIC	
35	10	821291 35	SCREW (M6 X 35)	2		
36	84	88807A29	CABLE (BLACK-9 IN.)	1		
37	10	812832 1	SCREW (10-16 X 3/5 IN.)	1		
38		827509A 6	CDM ASSEMBLY	2		4
39	10	821291 14	SCREW (M6 X 14)	4		
40	84	813715A13	HI-TENSION CABLE KIT	2		
41	85	62709A 1	BOOT KIT	2		